

INSPECTION D SCOPE MT



D SCOPE MT

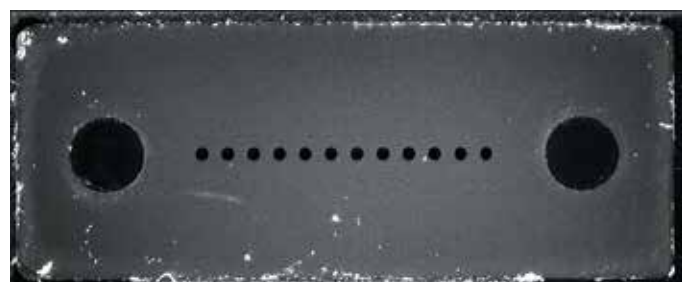
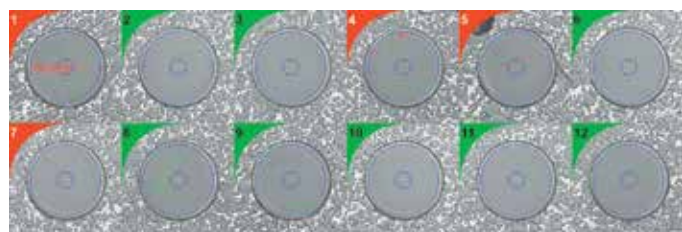
High resolution microscope for Multi-fiber connector

The new D SCOPE MT microscope for MTP/MPO connectors is **the fastest on the market**.

In the same measurement cycle, D Scope MT checks every optical fiber surface condition, and **allows the operator to control the cleanliness of the connector endface and guideholes**.

The fully automatic D SCOPE MT is **the ideal instrument for checking the conformity of connectors to Industry Standards**.

With very high measurement accuracy, D SCOPE MT has been designed for use in **high volume manufacturing environments or the most demanding laboratories**.



**DEEP LEARNING
INSIDE**

KEY FEATURES :

Testing of PC/APC connectors and ferrules from 1 to 64 fibers

Ultra-fast measurement time

Automatic Pass/Fail defect analysis

Automatic focus adjustment

High resolution optics with defect size detection of 0.3µm

Compliance with Industry Standards as IEC 61300-3-35

Real time full connector endface view

Intuitive Blink software with database connectivity

USB powered - no external power supply needed

Compatible with desktop PC, laptop, tablet PC

MEASUREMENT TIMES :

CONNECTOR TYPE	FIBER SCREENING ONLY	WITH END FACE VIEW
MT 12	3 sec.	5 sec.
MT 24	5 sec.	7 sec.

SPECIFICATIONS :

Magnification (fiber screening) :	x480 on 24" screen, 96 dpi
Defect size detection (µm) :	0.3
Outputs :	USB 3.0 + 2.0
Power source :	12V
Dimensions H x W x L (mm) :	105 x 230 x 285
Weight (kg) :	6.6

TYPICAL REPORT (FOR MT 12):

Inspection MT report Sample name: SG MPO 10 2018-07-13

Device serial: 4103307489-2 Camera settings accumulated frames: 1 exposure time: 20 ms gain: 1 gamma: 1	Profile: MT12-PC-Multimode.imt Fiber diameter: 125 µm	Custom fields Sample name: SG MPO 10 Operator: DataPixel	FAIL

Zone A: Core			Zone B: Cladding		
Diameter: 25 µm Scratches Allowed: None Defects Allowed: None			Diameter: 112 µm Scratches Allowed: No limit ≤ 3µm None > 3µm Defects Allowed: No limit ≤ 2µm Up to 5 from 2-5µm None > 5µm		
Fiber	Defects	Scratches	Defects	Scratches	Pass/Fail
1	2	4	0 ≤ 2µm 2 from 2-5µm 3 > 5µm	5 ≤ 3µm 0 > 3µm	FAIL
2	0	0	0 ≤ 2µm 2 from 2-5µm 0 > 5µm	1 ≤ 3µm 0 > 3µm	PASS
3	0	0	2 ≤ 2µm 2 from 2-5µm 0 > 5µm	0 ≤ 3µm 0 > 3µm	PASS
4	0	0	1 ≤ 2µm 2 from 2-5µm 4 > 5µm	2 ≤ 3µm 0 > 3µm	FAIL
5	0	2	1 ≤ 2µm 1 from 2-5µm 0 > 5µm	2 ≤ 3µm 0 > 3µm	FAIL
6	0	0	2 ≤ 2µm 1 from 2-5µm 0 > 5µm	0 ≤ 3µm 0 > 3µm	PASS
7	1	0	0 ≤ 2µm 0 from 2-5µm 0 > 5µm	0 ≤ 3µm 0 > 3µm	FAIL
8	0	0	1 ≤ 2µm 0 from 2-5µm 0 > 5µm	3 ≤ 3µm 0 > 3µm	PASS
9	0	0	0 ≤ 2µm 1 from 2-5µm 0 > 5µm	1 ≤ 3µm 0 > 3µm	PASS
10	0	0	0 ≤ 2µm 0 from 2-5µm 0 > 5µm	0 ≤ 3µm 0 > 3µm	PASS
11	0	0	1 ≤ 2µm 0 from 2-5µm 0 > 5µm	2 ≤ 3µm 0 > 3µm	PASS
12	0	0	3 ≤ 2µm 1 from 2-5µm 0 > 5µm	2 ≤ 3µm 0 > 3µm	PASS

ORDER OPTIONS :

D Scope MT unit with :	
- Blink Inspection MT	71-DSMT-V1-A10-00
- 2 flanges (MT + MPO 12/24)	
Flange MT Male/Female, PC/APC, 12/16/24/32 fibers	30-FL-002181
Flange MPO Male/Female, PC/APC, 12/24 fibers	30-FL-002182
Flange MPO Male/Female, PC/APC, 16/32 fibers	30-FL-002183
BLINK-INSPECTION for single fiber connectors measurement plugin	60-SW-000102
Flange Single fiber 1.25 mm PC/APC	30-FL-002314
Flange Single fiber 2.50 mm PC/APC	30-FL-002315

NB: In order to measure single fiber connectors on Dscope MT, the license for Blink Inspection plugin (60-SW-000102) is required.